

BIANCO **iCON**
SERIES **TANKS**

**iCON Pressure
Sewer Pump Stations**



BIANCO **iCON**
SERIES

BIANCO **CON**
SERIES **PUMPS**

BIANCO **CON**
SERIES **DRIVES**

BIANCO **iCON**
SERIES **CONTROLS**

BIANCO **iCON**
SERIES **FILTRATION**

iCON Pressure Sewer Pump Stations

Introducing the Bianco iCON range of Packaged Pump Stations.

The iCON Pressure Sewer Pump Station is suitable for installation in various domestic and industrial applications where grinding and evacuation of sewer is required to a pressurized sewer main. The iCON pump station is designed to withstand ground and water pressure when installed according to the installation instructions. It has smooth internal walls and an optimum collection area to aid in the removal of waste water and prevents smell and septicity.

Bianco iCON Series Tanks conform to Product Standard - AS/NZS 1546.1:2008 with certification available upon request. Other approvals have also been obtained in certain states which are also available upon request.

The Bianco iCON pump station is moulded in polyethylene. Installations with either single or dual pumps systems are possible. Plumbing options include free standing or guide rail installations depending on site requirements. The iCON Pressure Sewer Pump Station is supplied as standard with a Polyethylene Lid with the option of class B or class D lids available. Automated control of the system is possible through level input signals normally provided by means of float switches connected to a pump control panel (see page 4) and set at the required levels inside the tank.

Options other than float switches are available upon request. Isolation valves and non-return valves are usually included in our packaged pump stations but should be specified at the time of the quotation.



iCON Pressure Sewer Pump Stations

SPECIFICATIONS



Applications
Raw sewage

900L Polyethylene Pump Station

Model No	BIA-ICON900
Depth	1210mm (excluding lid)
Lid Height	70mm
Diameter	1200mm
Access cover	600mm diameter
Approximate weight	55kg (excluding plumbing and pump)

Available in

- BIA-ICON900 Tank only
- BIA-ICON900 Tank with single free standing plumbing
- BIA-ICON900 Tank with single plumbing and guide rails
- BIA-ICON900 Tank with dual free standing plumbing
- BIA-ICON900 Tank with dual plumbing and guide rails

Tanks are supplied as standard with polyethylene lids and are available with lid options as follows: > Class B > Class D

Risers are available as an optional extra (550mm).

Inlet plumbing to be installed by plumber on site.

Approved boundary kits are available (sold separately) to isolate the pressure sewer from the pressurized sewer main.

1200L Polyethylene Pump Station

Model No	BIA-ICON1200
Depth	1610mm (excluding lid)
Lid Height	70mm
Diameter	1200mm
Access cover	600mm diameter
Approximate weight	75kg (excluding plumbing and pump)

Available in

- BIA-ICON1200 Tank only
- BIA-ICON1200 Tank with single free standing plumbing
- BIA-ICON1200 Tank with single plumbing and guide rails
- BIA-ICON1200 Tank with dual free standing plumbing
- BIA-ICON1200 Tank with dual plumbing and guide rails

Tanks are supplied as standard with polyethylene lids and are available with lid options as follows: > Class B > Class D

Risers are available as an optional extra (550mm).

Inlet plumbing to be installed by plumber on site.

Approved boundary kits are available (sold separately) to isolate the pressure sewer from the pressurized sewer main.

Applications
Raw sewage

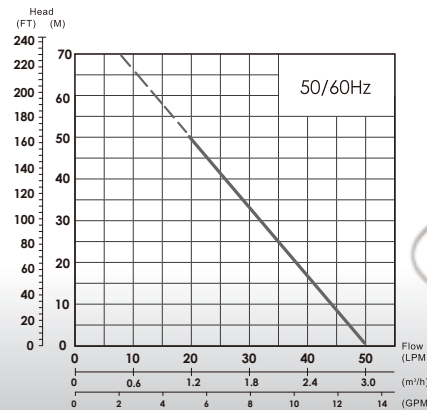


Positive Displacement Grinder Pump

Liquid temperature: 0 °C to 40 °C /
+32 °F to +104 °F
HP range: 1.5 HP/ 1.1 kW
PH: 6 to 8
Protection class: IP68
Maximum immersion depth: 8M



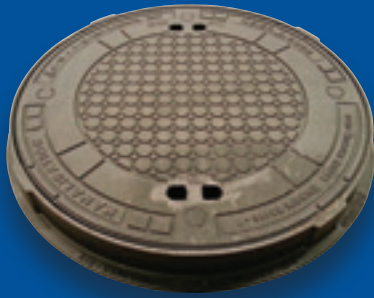
Performance Curve



SPECIFICATIONS

MODEL	PRONTO CODE	DESCRIPTION
BIA-PDG150MA	800252	1.1kW, 1.5hp, 240V, with float switch, max hd 50m, max flow 50L/m, 1 1/4" BSPF outlet
BIA-PDG150M	800587	1.1kW, 1.5hp, 240V, without float switch, max hd 50m, max flow 50L/m, 1 1/4" BSPF outlet
BIA-PDG150TA	800588	1.1kW, 1.5hp, 415V, with float switch, max hd 50m, max flow 50L/m, 1 1/4" BSPF outlet
BIA-PDG150T	800589	1.1kW, 1.5hp, 415V, without float switch, max hd 50m, max flow 50 L/m, 1 1/4" BSPF outlet
BIA-PDG150-CF32	801985	DN32 Discharge pedestal

Lid options



Class B / D
(picture indicative only)

Boundary Kit



The stainless steel boundary kit is generally located immediately adjacent to the front boundary of the property and allows the property to be isolated from the pressurised sewer pipeline in the street. The boundary kit comprises of a keyed isolation ball valve, swing check valve and an inspection tee arrangement inside a rugged and reinforced polypropylene valve box.

Control Panel

Also available from
our range of products

Single Pump Control

SPC1 2.2kW
SPC3 4kW, 11kW, 15kW



Dual pump control

DPC1 2.2kW
DPC3 4kW, 11kW, 15kW



Alarm

iAlarm High/Low
Level



WHITE INTERNATIONAL PTY LTD

52-60 Ashford Ave Milperra NSW 2214
PO Box 304 Milperra LPO NSW 2214
Phone 02 9783 6000 Fax 02 9783 6001
Customer Service Hotline 1300 783 601
Email Sales: pumpsales@whiteint.com.au
General info: info@whiteint.com.au
www.whiteint.com.au

WHITE INTERNATIONAL NZ LTD

15G Kerwyn Avenue, East Tamaki
Auckland 2013, New Zealand
Phone 09 579 9777 Fax 09 579 7775
Customer Service Hotline 0800 509 506
Customer Service Faxline 0800 804 344
Email Sales: sales@whiteint.co.nz
General info: info@whiteint.co.nz
www.whiteint.co.nz

